

Brandon

Rectangle



FOYER

Installation guide and owner's manual

TECHO — BLOC

Table of contents

Components.....	3
Overall Dimensions.....	4
Positioning reference per layer	5
Foundation preparation	
Paver surface or Concrete slab	5
Compacted gravel base	5
Installation of blocks	5-6
Operation and maintenance	7
Warranty.....	7

General information

PLEASE SAVE THIS OWNER'S MANUAL FOR FUTURE REFERENCE

Check with your municipality for regulations on the installation and use of outdoor fire pits. We also recommend that you contact your home insurance company and advise them of the acquisition of your new Techo-Bloc fire pit.

IMPORTANT

This fire pit is for **OUTDOOR USE ONLY**. NEVER build a fire pit for use in a house, warehouse, gazebo, garage, or any other indoor setting.

Check with your municipality for minimum clearance distances. Make sure that there is nothing directly above the fire pit area that can be a potential fire and/or injury hazard (e.g. tree branches, awnings, patio umbrellas, electrical wires, transformers, cantilevered roof structures, etc.).

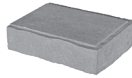
When selecting the location of your fire pit, make sure that it is located at least 20 feet away from any structure or building unless indicated otherwise by the gas fire pit (if applicable) manufacturer.

WE RECOMMEND THAT GAS FIRE PIT PRODUCTS ARE INSTALLED BY PROFESSIONALS LOCALLY LICENSED BY THE AUTHORITY HAVING JURISDICTION IN GAS PIPING. REFER TO MANUFACTURER'S INSTALLATION AND OPERATION INSTRUCTIONS.

Components



A. Brandon 90 mm C
(x20)



B. Brandon 90 mm corner
(x30)



C. Raffinato Cap 60 mm 12" x 19"
(Pre-cut) (x8)



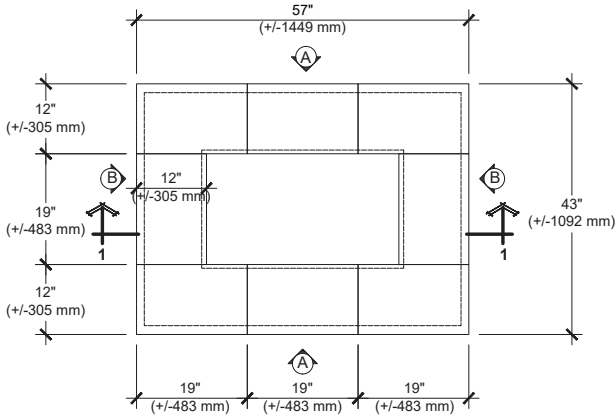
D. Steel Insert for Wood fire pit.
(sold separately)



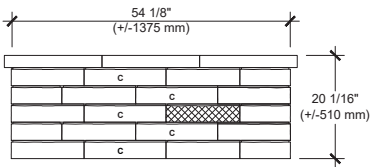
E. Gas kit - Natural Gas or Liquid Propane
(sold separately)

Overall Dimensions

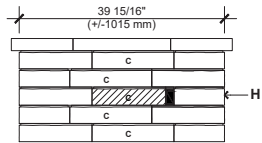
Below are the overall dimensions of the fire pit (inserts not shown). The height shown is the total height (including buried portion). Unless installed directly on a paver surface or concrete slab, the fire pit should be buried about 2" or 3" below finished grade.



TOP VIEW



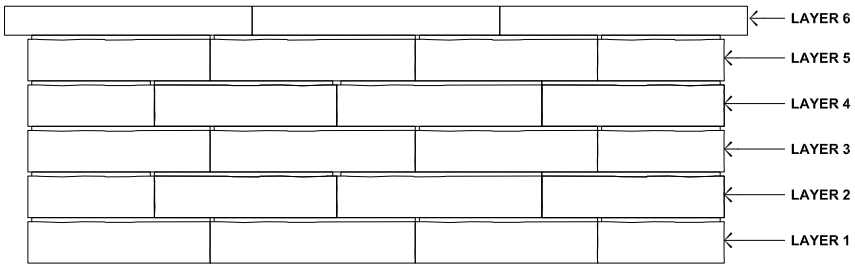
ELEVATION A



ELEVATION B

-  RECOMMENDED LOCATION FOR VENT ACCESSORY (GAS KIT);
-  RECOMMENDED LOCATION FOR IGNITION CONTROL (GAS KIT);
-  PRE-CUT BRANDON 90 mm BLOCK (GAS KIT)

Positioning reference per layer



Foundation preparation

PAVER SURFACE OR CONCRETE SLAB

If you are building the fire pit on an existing paver surface or concrete slab, drill through the pavement to provide a 2" diameter drain hole at the lowest point. This will allow the rainwater to infiltrate into the ground. Fill the drain hole with clean stone. Go to step *Installation of blocks*.

FOR A GAS FIRE PIT,
PLAN THE INSTALLATION
(GAS LINE, RISER) ACCORDINGLY
WITH A PROFESSIONAL LOCALLY
LICENSED BY THE AUTHORITY
HAVING JURISDICTION
IN GAS PIPING. REFER TO
MANUFACTURER'S INSTALLATION
AND OPERATION INSTRUCTIONS.

COMPACTED GRAVEL BASE

Mark out the area of the fire pit and excavate to accommodate 6" of well compacted, dense-graded aggregate base, a 1" layer of sand setting bed, and about 2" or 3" of fire pit wall that will be buried below ground. The aggregate base should extend at least 6" on all the sides of the fire pit walls.

It is recommended that a geotextile be laid on the top of the soil surface and up the sides of the excavated area.

Place and uniformly compact the aggregate base. The aggregate base should be compacted, for best results, using a vibratory plate compactor, or hand tamper.

Spread 1" concrete sand setting bed and level using two 1" diameter pipes and a straight edge (such as a 2"x4"). Keep in mind that the 1" setting bed will be reduced to 5/8" once the wall blocks will be set into the sand setting bed with a mallet.

Note: if the fire pit is being installed along with a paver installation, the aggregate base course and setting bed of pavers can be extended to be used for the fire pit installation.

Installation of blocks

LAYER 1

Place the first course of blocks with the narrower side of the block facing towards the center of the fire pit. Verify that no gaps are left at the outer face of the blocks. Once the first course has been aligned, use a soft-head mallet to set the blocks into the sand setting bed. Make sure that the blocks are leveled from front to back, side to side, and from block to block.

LAYER 2 TO 5

Install the next courses as shown on the drawings and using the insert as a template (when possible) taking into consideration the requirements of the specific insert selected.

Use a heat resistant concrete adhesive to glue every course to the blocks beneath it. All units should be dry and dust free before applying adhesives. Any alignment adjustments should be done quickly as the adhesive will set up in a short amount of time and the block will set in place.

LAYER 6

(Cap installation) - make sure the inserts (wood or gas) fit before fixing the coping units.

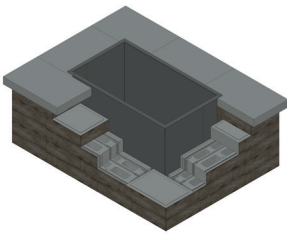
Dry lay the cap units and place the insert (wood or gas) in the center of the opening as required. Make sure that the insert flange (if applicable, e.g. for the wood inserts) rests evenly on top of the cap units and that the cap units overhang the fire pit wall in a uniform way.

Take out the insert (wood or gas) and lift up each cap unit individually leaving the others in place to act as a guide. Apply adhesive to glue every cap unit to the blocks beneath it. Put the insert back with the flange resting on top of the cap units (if applicable, e.g. for the wood inserts).

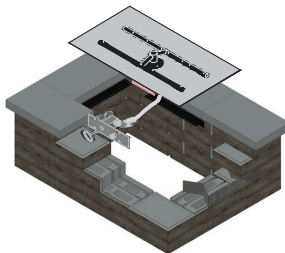
Fill the inside of the pit with 3/4" (20 mm) clean stone to a depth of 4" (100 mm). This will allow the filtration of any water that may evacuate through the walls of the fire pit following a rainstorm.

Do not light a fire for at least 48 hours to allow any adhesive to cure properly and for potentially flammable fumes to dissipate.

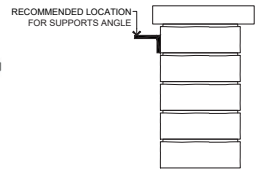
Insert options

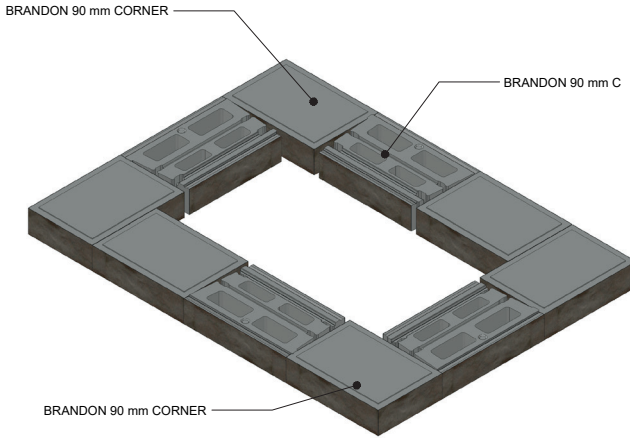


WOOD FIRE PIT SLEEVE INSERT
INSTALLATION

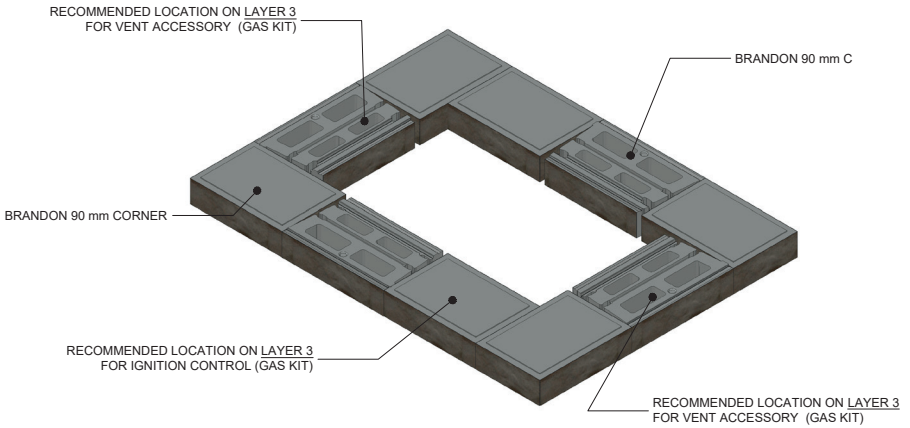


GAS KIT INSTALLATION





LAYER 2 & 4



LAYER 1, 3 & 5

Operation and maintenance

FOR A GAS FIRE PIT,
CONSULT ALSO THE MANUFACTURER
OPERATION AND MAINTENANCE MANUAL.

- › The firepit is not designed for large fires. Fire should be contained at least 6" away from the firepit wall blocks. Overheating could lead to heat damage to the firepit components. Use only a small amount of dry and clean hardwood for burning.
- › Allow the fire to burn out on its own unless it is an emergency case. Extinguishing an active fire with water or any other liquid may cause the metal components of the accessory kit to warp and will encourage the formation of rust.
- › Do not burn charcoals, leaves, trash, paper, cardboard, and softwoods such as pine, cedar and plywood.

- › Do not use lighter fluid, gasoline, or other fire accelerants to start or maintain fires.
- › Never touch the steel insert and flange while a fire is lit. The steel insert and flange will become extremely hot and burn the skin on contact. Wear fire resistant gloves when maintaining the fire.
- › The fire pit area must always be clear and free from any combustible materials such as gasoline, propane tanks and/or any other flammable vapors and/or liquids.
- › Always have a fire extinguisher or garden hose nearby for any potential emergency.
- › Avoid using the fire pit in windy conditions.
- › At each use, before starting a fire, remove all accumulation of ashes, wood and debris from the fire bowl and inspect the overall fire pit and accessories to ensure that it is in safe operational condition.
- › Children and pets should NEVER be left unsupervised when the fire pit is in use. We highly recommend that good fire safety measures are practiced and that you and your guests maintain a minimum distance of 3 feet away from the fire pit to avoid potential injury.
- › Do not sit, lean on or stand on the fire pit wall.
- › Ensure that the fire pit area is always clear of toys, clothing, etc.
- › Do not use the fire pit for cooking purposes unless otherwise permitted by the manufacturer.
- › Never leave an active fire unattended.
- › It is recommended to replace the clean stone at the bottom of the fire pit annually to maintain proper water filtration.

Warranty – Fire Features

In the event of product failure within the scope of this warranty, Techo-Bloc will repair or replace the affected item only, following a site inspection and assessment of the product by Techo-Bloc or its representatives. At Techo-Bloc's sole discretion, the product under warranty will be repaired or replaced. If we determine that repair is not viable, we reserve the right to replace the defective item with an equivalent to the original item. Techo-Bloc's responsibility is limited to the cost of the product only and not to the costs related to labor, removal, or installation of the products. Techo-Bloc does not provide maintenance, repair services or spare components of any fire feature accessory. However, Techo-Bloc will be able to point you in the right direction to the manufacturers of these accessories/parts.

TECHO-BLOC WILL HONOR THIS WARRANTY WITH PROOF OF PURCHASE SUCH AS AN INVOICE OR DELIVERY SLIP.

PRODUCT	WARRANTY
Techo-Bloc Fire Pit Concrete Products	Lifetime
Techo-Bloc Fireplace Concrete Products	Lifetime
Lumi Fire Bowl Concrete Vessel	One Year
HPC Fire Pit Stainless Steel Burner	Lifetime
HPC Outdoor Fireplace Burner	Lifetime
HPC Electronic Ignition Components	3 years
HPC Pilot Assemblies	2 years
HPC Stainless Steel Components	5 years
HPC Flex Liner	5 years
HPC Regulators	3 years
HPC Outdoor Log Sets	3 years
HPC Fire Pit Cover	3 years
Breeo Zentro Fire Pit Inserts	Lifetime

REGARDING ALL FIRE FEATURES, THE FOLLOWING CONDITIONS OR EVENTS ARE NOT COVERED BY THE WARRANTY:

1. Claims regarding the color, size, or texture of a product already installed. An installed product confirms the acceptance of the product received.
2. Use of rock salt or any other type of salt, sand, baking soda or other elements not recommended for extinguishing flames.
3. Splitting, chipping, or other breakage caused by impact, abrasion, or overloading.
4. Damage or loss caused by the movement or settling of the underlying structure or base components upon which the product is set.
5. Damage or loss caused by installation or maintenance not in compliance with local codes or installation manual provided by the manufacturer.
6. Damage or loss caused by natural disasters including, but not limited to, earthquakes, floods, or other similar events.
7. Alterations, acts of negligence or misuse by the owner, installer or any third party.
8. Color matching to printed representations.
9. Efflorescence, polymeric haze, or construction-born residue. For more information on efflorescence, consult our care guide: <https://www.techo-bloc.com/support/customer-support/care-and-maintenance>
10. Normal wear and tear, such as variation in colors or shades.
11. Rental use or commercial applications.
12. Decorative fill material such as lava rock (or any product of the same kind.)
13. Heat cracking or discoloration due to excessive heat exposure.
14. Use of improper fuels.

FIRE PIT KITS & ACCESSORIES

Fire Pit Kits include Brandon, Prescott, Raffinato, Valencia.

Fire Pit accessories include Sleeve inserts, HPC Burners Kit, Breeo- Zentro smokeless steel insert.

Concrete units used to assemble Techo-Bloc fire pit kits are warranted against defects in material and workmanship under normal use for the lifetime of the product from the date of purchase. This warranty is non-transferrable and thus valid only for the original consumer of this product. Third party components of fire pit kits such as burners and other accessories carry their respective manufacturer's warranty and may change without notice. Please visit the Techo-Bloc product pages for manufacturer warranties.

As fire pits age, color may lighten or darken according to specific field or storage conditions such as humidity, temperature, and exposure to sunlight. Smoke and soot that are created by various elements may affect the appearance of the fire pit; these are factors beyond Techo-Bloc's control.

Wood-burning fire pits must be lined with a proper insert or firebrick to protect the concrete units from extreme exposure to heat. Extreme heat on a concrete surface may affect the structural integrity of the concrete components and can be dangerous. The floor of the fire pit should always be constructed with free-draining material or firebricks with proper drainage.

FIREPIT CARE & MAINTENANCE

WINTER CARE - We recommend covering your fire feature with a breathable material over the winter months to avoid any possible damage.

FIREPIT SLEEVE CARE - The purpose of the fire pit burner sleeve is to provide protection to your concrete product against direct flames within your fire feature. Although this product is engineered to withstand a certain level of heat, it is possible that the painted surface may experience chipping and rust development over time. This occurrence is not indicative of a defect, but rather a natural effect of exposure to fire. As a solution, we suggest utilizing high-quality, high heat enamel spray paint to touch up your fire pit sleeve as needed. This will help to maintain its aesthetic appeal and protect against deterioration.

Available in wood, natural gas & liquid propane burning options.

Visit [techo-bloc.com](https://www.techo-bloc.com) to discover more.

Raffinato 14" x 28" caps included. Metal fire pit insert sold separately.

The installation of a sleeve or accessory kit will prevent damages to your fire pit.



CANADA

MONTREAL

5255 Albert-Millichamp Street, Saint-Hubert,
QC J3Y 8Z8

CHAMBLY

7800 Samuel-Hatt Street, Chambly, QC J3L 6W4

OTTAWA

581 Somme Street, Gloucester, ON K1G 6Y7

TORONTO

10 Freshway Dr., Vaughan, ON L4K 1S3

TORONTO

2852 Cedar Creek Road, Ayr, ON N0B 1E0

USA

ATLANTA

3908, Flint Hill Ext. SE, Powder Springs, GA 30127

CINCINNATI

9950 Farr CT, Cincinnati, OH 45246

DETROIT

2210 Scott Lake Rd., Waterford, MI 48328

ILLINOIS

8201 31st St. W, Rock Island, IL 61201

ILLINOIS

105 Serena Court, Minooka, IL 60447

INDIANA

2397 County Rd 27, Waterloo, IN 46793

MARYLAND

6710 Binder Ln., Elkridge, MD 21075

MASSACHUSETTS

70 East Brookfield Rd., North Brookfield, MA 01535

MINNESOTA

4372 170th St. W, Farmington, MN 55024

NASHVILLE

160 Center Point Rd. S, Hendersonville, TN 37077

NEW YORK

55-65 South 4th Street., Bay Shore, NY 11706

NORTH CAROLINA

5135 Surret Dr., Archdale, NC 27263

OHIO

97 Industrial St., Rittman, OH 44270

PENNSYLVANIA

852 W. Pennsylvania Ave., Pen Argyl, PA 18072

PENNSYLVANIA

23 Quarry Rd., Douglassville, PA 19518

CONTACT US

TOLL FREE:

1.877.832.4625

WWW.TECHO-BLOC.COM

PROUD MEMBER OF



TECHO—BLOC

Inspiring Artscapes